

PowerMonic

Power Quality & Disturbance Analyzer

- Portable 3 Phase Analyzer
- Compact and Rugged
- Weatherproof
- Versatile
- Intuitive and Easy to use



Know your Power Quality

Analyze power systems and find the cause of disturbances that can result in plant shutdown, equipment failure, increased wear & tear, lost productivity and lost revenues. The instrument of choice for electrical utilities, consultants, and industrial electrical engineers.

Power Quality and Reliability Solutions since 1974

GridSense™

PowerMonic

Power Quality & Disturbance Analyzer



PM30+ POWER QUALITY ANALYZER

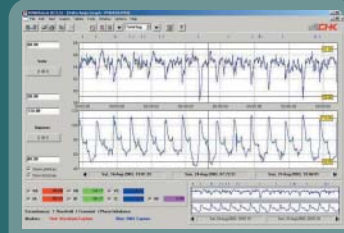
- Tables & graphs of 3 phase V, A, pf, f, kW, kVA, kVAr, THD, total energy & tariffs
- Log Max/Min volts and current over log interval
- Ideal for capturing RMS disturbance 'events' such as fast motor starts and HVAC loads
- Disturbance capture using "out-of-bounds" absolute limits or percentage change of V&I
- Download files while logging - directly or remotely by cellular modem
- Auto scaling graphs plus zoom, table summaries with filters, sag/swell start and stop times
- PQ analysis and printing of graphs with user notes and tools to export all data to Excel
- Flash memory firmware for user firmware upgrades when new features are released

HIGH SPEED WAVE FORM EVENT CAPTURE & HARMONICS

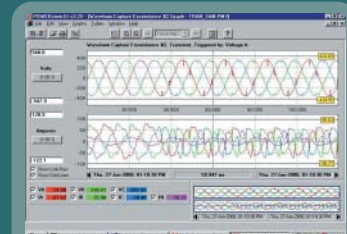
- Ideal for capturing wave form disturbances with added transient trigger to record sub cycle events and disturbances such as spikes, switching capacitor banks, harmonic ripple etc.
- Log and analyze individual harmonics up to 48th (V and I across all phases)
- Relative Harmonic Phase Angle logged for post harmonic analysis

SPECIFICATIONS

| | Voltage | Current |
|-------------------------------|--|-----------------------------------|
| Channels | 3 (isolated) | 4 (3 Phase + Neutral) |
| Range (RMS) | Up to 480V | 0-3000A |
| Mains voltage (Phase-Neutral) | Any within Range | |
| Instrument Accuracy | +/- 0.4% + 1 lsd | +/- 0.4% + 1 lsd |
| System Accuracy | +/- 0.4% + 1 lsd | +/- 0.4% + 1 lsd (class 0.5M CTs) |
| Display Resolution | 0.1V | 0.1A (to 500), 1A (> 500A) |
| Temperature | -10 to +60 degrees celcius | |
| Humidity | 20 to 99% RH | |
| Protection Class | IP65 | |
| Sample Rate | 11,413 samples per second | |
| Log interval | RMS Profile: 10 sec to 4hr log interval RMS Events: 11.3 sec duration at 10ms intervals Waveform Events: Six cycles at 87us samples | |
| Power Source | Powered up on connection between Phase-A and Phase-B or Phase-A and Neutral Rechargeable battery for backup and recording during short term interruptions | |
| Power Consumption | 10 Watts typical | |
| Burden | 2.2 Ohm | |
| Memory | 4Mbyte with memory management feature | |
| Communication | RS232 and USB, 1200-115,200 bps, software selectable | |
| Display | Selectable scroll of date, time, V,I,pf,f, and log status | |
| Software | PowerView, Windows™ based | |
| Dimensions | 230mm(l)x120mm(w)x90mm(d)[9"x4.7"x3.5"] | |
| Weight | 2.5kg or 5.5lbs (instrument), typical system 6kg or 13.2lbs | |
| Safety Compliance | IEC 61010, CAT III | |



A typical voltage & current profile



A typical voltage & current waveform capture

ACCESSORIES

- A range of clip on Current Transformers (CTs) in varying sizes, up to 3000A, class 0.5M to 2M and IP65 versions.
- 600mm and 900mm Flexible CT's
- Substation Converter Kit: 1A:200mA (CK1) or 5A:200mA (CK5)
- Delta, Star or Isolated voltage lead sets, attachments include large conductor clamps, tinned end leads, 4mm banana plug ends and small alligator clamps
- Protective rubber holster and installation strap
- External weatherproof cellular modem kit
- Custom carry bag



GRIDSENSE.

CHK GRIDSENSE PTY LTD
Unit 3 Ground Floor 20-26 Nancarrow Avenue PO Box 1022 Meadowbank NSW 2114 Australia
Tel: 61 2 8878 7700 Fax: 61 2 8878 7788 Email: sales@GridSense.net • Website: www.GridSense.net